

Release Notes

BizInsight 7.3.2
February 17, 2017

Copyright Notice

BizNet Software, Inc. makes no representations or warranties with respect to the contents of this document and specifically disclaims any implied warranties of merchantability or fitness for any particular purpose.

We welcome user comments and reserve the right to revise this publication and to make improvements or changes to the products and programs described in this publication at any time without notice.

Mailing Address:

BizNet Software, Inc.
14755 Preston Rd., Suite 800
Dallas, TX 75254

Phone:

972-893-0000

Web Site:

www.biznetsoftware.com

© Copyright 2016 by BizNet Software, Inc. All rights reserved.

Printed in the United States of America

No part of this publication may be reproduced in any form without the prior written consent of BizNet Software, Inc.

Trademarks

BizInsight is a registered trademark of BizNet Software, Inc.

Windows and Microsoft Excel are registered trademarks of Microsoft Corp.

All other trademarks are acknowledged.

Table of Contents

I. New Features	4
II. Product Enhancements.....	4
1. BizInsight PackNGo Distribution Menu.....	4
2. Option to Re-locate ReadyCache Storage	5
III. Issues Resolved	6
IV. Known Issues	8
V. Best Practices	11

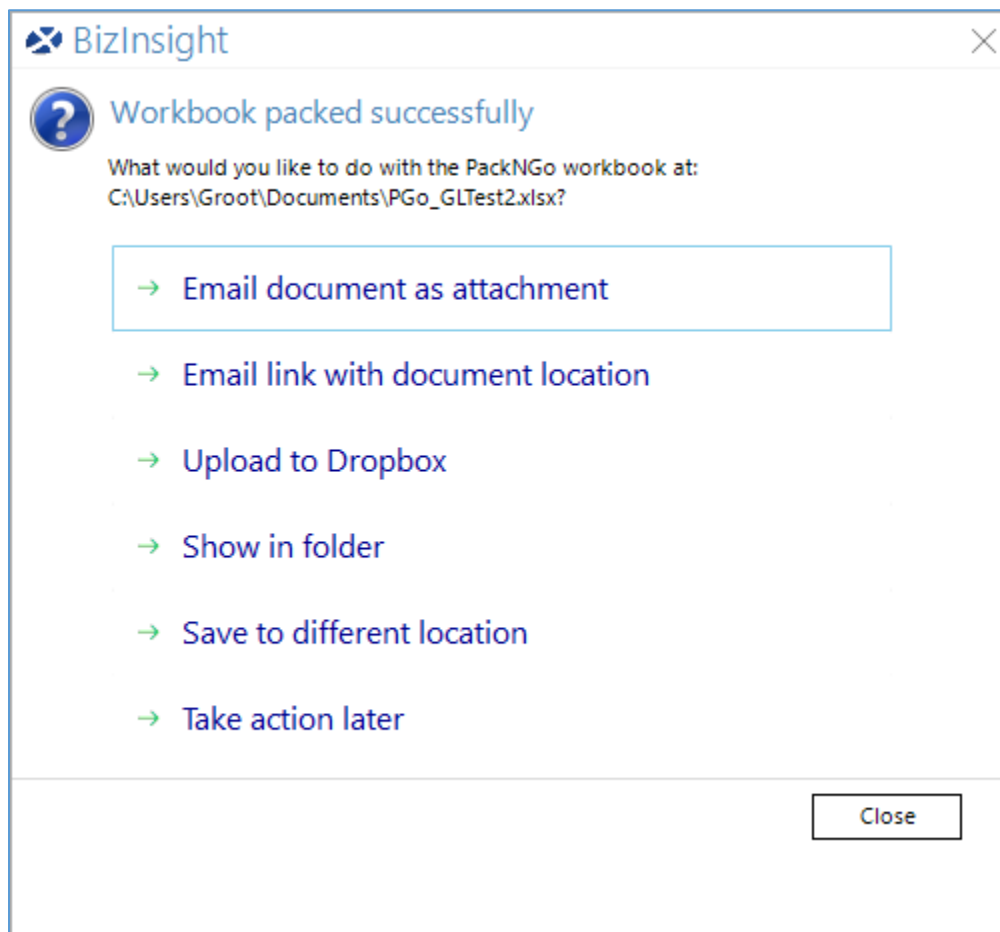
I. New Features

There are no new features in this release.

II. Product Enhancements

1. BizInsight PackNGo Distribution Menu

The Pack 'N' Go feature has been enhanced to provide several distribution options for the packed content.



Users now have the option to do the following:

- Send email with the PackNGo workbook as an attachment

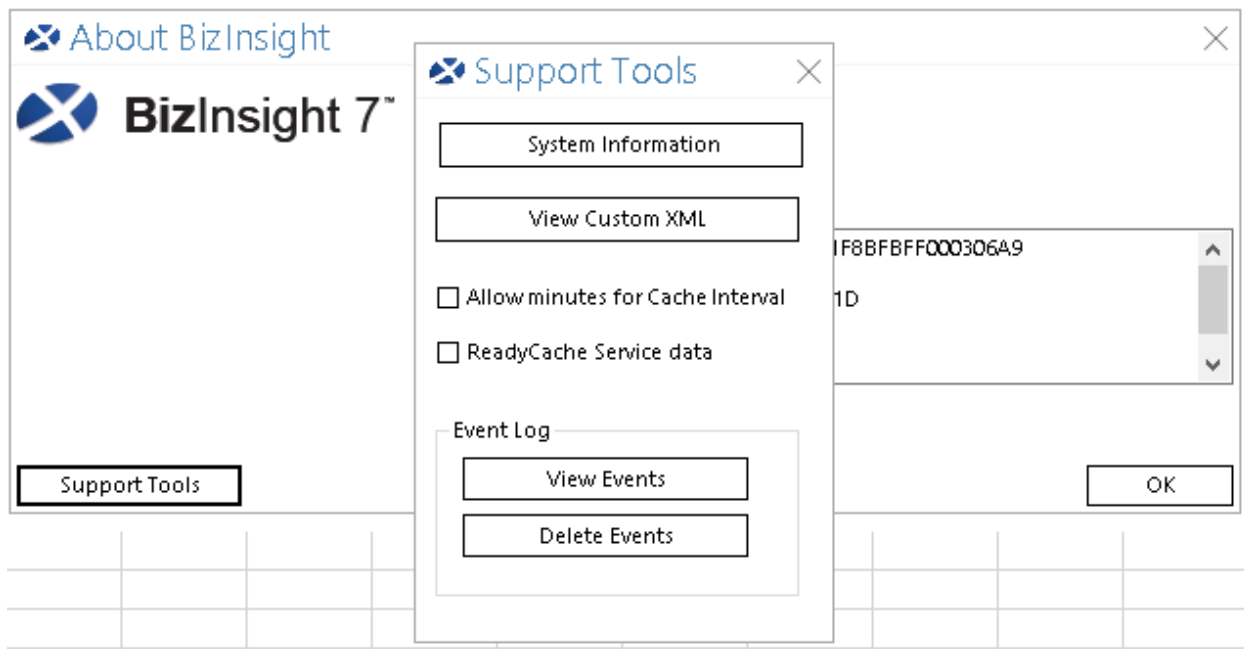
- Send email with a local directory link to the PackNGo workbook in the email body
- Upload PackNGo workbook to Dropbox and embeds a Dropbox link in email
- Display PackNGo workbook location on the computer
- Save PackNGo workbook to a different location path on the computer
- Take action later and PackNGo workbook remains in the default location

For more information about these options, refer to the *PackNGo* section of the BizInsight 7 User Guide.

*** The PackNGo feature is only available when a Connector is installed along with BizInsight 7. Standalone BizInsight 7 does not have PackNGo enabled. ***

2. Option to Re-locate ReadyCache Storage

A checkbox has been added to the Support Tool dialog to move ReadyCache storage from the caching service to local Excel memory. This is an experimental feature designed to improve calculation time and is not fully supported yet. The Support Tool dialog can be accessed by clicking on the **About** button on the BizInsight ribbon and then clicking **Support Tools**.



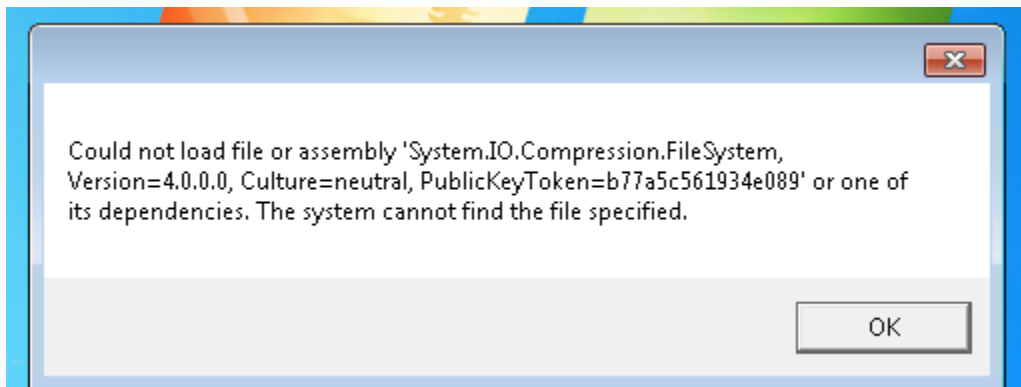
III. Issues Resolved

1. Improved performance when the number of ReadyCaches increased in the Service.
2. Improved the serialization and deserialization of ReadyCaches in the Service.
3. Redesigned the product to remove all ReadyCache items from memory when configuring a new connection datasource.
4. Resolved problems using the Dynamic Table with Data Validation option selected.
5. Resolved issues with ribbon buttons remaining disabled when the Activate button is clicked before BizInsight is loaded.
6. Updated the product to allow users to cancel a refresh when the "Sign-in information is incorrect" error occurs.
7. Resolved an issue the Navigation Pane displaying the blue expand/collapse arrow at the parent node level when all children nodes were deleted.
8. Resolved an issue with a popup status message prompting that the workbook is calculating when selecting loose data to commit as an Excel cache.
9. Resolved duplication of Navigation Pane entries when multiple Connectors are installed.
10. Updated the product to resolve an issue where Tables that use a cell reference for a filter were not being updated if the referenced cell was cut and paste somewhere else.
11. Resolved an issue where Functions would return zeros if the filter value contained a # character.
12. The Query Editor filter on available values drop-down selection, typing literals, or cell references are reset for user, so the filter control does not freeze.
13. Users will now receive a generic error message if they choose a PackNGo email option but don't have Outlook installed.
14. Resolved PackNGo support with dynamic tables
15. PackNGo double click workbook prompts to unpack successfully.
16. Resolved refreshing multiple SuperTables on the same worksheet
17. Resolved BizInsight support for side-by-side v5 Analysis Set and v7 table refresh
18. Resolved BizInsight worksheet rename fix in Table expression. The expression dynamically changes in the table when a worksheet is renamed.
19. Resolved BizInsight support in Broadcast multiple tabbed parameters. Table expressions with cell references were not changing when the worksheet name was renamed.
20. Resolved cell selector button issue when a range of cells is selected or an existing named range is used.

21. Parameters can now be applied to Query Data validation lists
22. Right-click data cache management options that were previously only available with SuperFunctions are now also available on Tables.
23. Improved Data Validation stability when creating multiple data validation lists on the same column of data.
24. Improved Query Data to handle values that contain text that resemble Excel column cell addresses. For example, the filter value being used is AA7 but Excel automatically interprets that value as a cell reference.
25. Query Data has been updated to prevent users from accidentally removing server-side required parameters.
26. Resolved anchoring selection when editing a query in the Query Data button. The rehydration of the query did not persist the anchoring selections.
27. Resolved a mouse scroll wheel issue with the cell selection popup when building a query that uses cell reference for one of its filters.
28. Resolved the issue where the Query Data form was disappearing after clicking the cell selector button and then clicking on a cell. The focusing fix loads the Query Data form correctly in every step of building a query workflow.

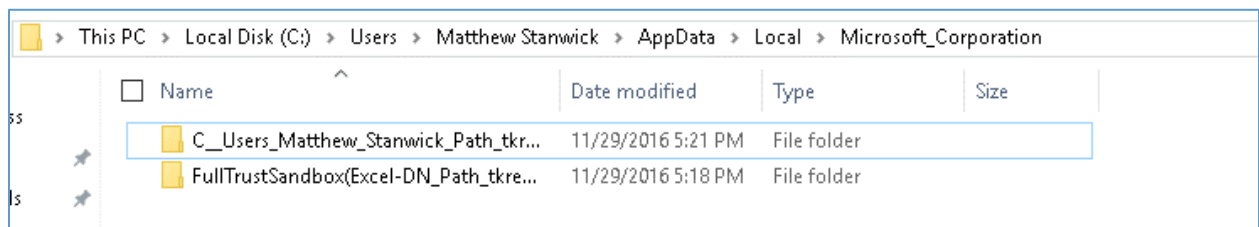
IV. Known Issues

1. BizInsight 7 requires unique column headers to add tables and SuperFunctions to cache. Users are required to rename duplicate column headers.
2. In Excel 2016 without Windows updates, data fails to serialize on disk if the user doesn't click Save when prompted to save. When Excel prompts to save, users should save their workbook to ensure the serialization of data to disk. Another solution is to update Excel 2016 from 16.0.6701.1041 to the newest version.
3. Windows 7 requires .Net Framework 4.5.2 or greater for installation. When users attempt to install 7.3 Connectors on Windows 7, an error will occur during the startup of the Connector install wizard. The solution is to update the user's computer to .Net Framework 4.5.2 or greater.



4. BizInsight 7 internationalization for Spanish, French, and German is currently unavailable. Full language support is in development.
5. Users on BizInsight 7.2 Connectors upgrading to 7.3 Connectors, the Service previous setting ForceCase is set to "true". The product verifies the device name and is case sensitive. In order to resolve the product from being disabled in Excel for some users, the setting must be manually set to "false".
6. When using a Table and filtering with a LIKE operator in Query Data, the comparing datatypes must be similar datatypes. For example, string to string and number to number. When datatypes are mixed, the Table with a LIKE filter does not refresh correctly due to operator comparison problems. We recommend only using wildcard (*) with LIKE operator. A BizInsight 7 warning prompt is in development to notify the user when datatypes are mixed with a LIKE operator.

7. Installing BizInsight 7 standalone build requires two Excel launches and close. Registry keys record first start and load on-demand settings. When the first start of Excel is interrupted by the action of clicking on Excel ribbon buttons other than the product ribbon buttons, the settings are not properly saved in the registry. The product continues to function, however, the Excel COM add-in appears to be disabled. The recommendation is to start and close Excel twice after installation.
8. BizInsight 7.2 serialized data is not supported in BizInsight 7.3. Users who are upgrading with stored data caches are required to delete the serialized data caches and retrieve the data again through BizInsight 7.3.
9. BizInsight 7.3 inspects certain directories for settings when BizInsight 7.3 functionality is called. When legacy user.config files remain in those directories, BizInsight 7.3 fails to connect to the Service (BizAccelerator). These remnant files can be caused by previous installation of BizBroadcast version 2.3.1 or below and BizInsight v5. The workaround is to manually remove the remnant user config files in the AppData directory.



10. BizInsight 7.3.2 exhibits some focusing issues with multiple monitors. When users ALT+Tab or use the Query Data form in Excel, the focus may be set to another form.
11. In BizInsight 7.3 PackNGo, if the workbook contains local Excel caches, the Data synchronization in the Query Data button should be set to Automatic or on Startup Only. If the option is changed from the default Automatic setting, the PackNGo workbook will not transfer the local Excel caches into the PackNGo workbook.
12. The Select Data capability requires users to be on the worksheet on which the data exists.
13. BizInsight Tables are automatically assigned Excel range names when created. Deleting the Table does not delete the assigned Excel range name and it will continue to display in the Select Data dialog until manually deleted.
14. In some tablet environments, or desktop environments that have text magnifier enabled (a display setting in Control Panel), BizInsight dialogs are not ideally sized and may have to be expanded to display all of their buttons. Once a user resizes a window, size selection will be preserved the next time the product is used.

15. Native Excel functions cannot be embedded in BizInsight Functions.
16. Editing local data cache column headers requires the data to be re-selected (using the **Select Data** button) in order for that data set to be usable by BizInsight Functions.
17. **Formula Modifiers with BizInsight Functions.**

Formula modifiers, such as “*-1”, that are used with BizInsight Functions will not be represented in the BizInsight Query dialog when the Function is being edited. The formula modifier will be included when the Function is inserted into a cell.
18. **Blank cells and Zeros**

Blank cells are considered a null value, not a zero. This should be kept in mind when building parameters that are looking for zero values. If you have a column of numbers that have empty cells, you will want to populate these cells with zeroes before building filter parameters that are looking for zeroes.
19. **Lotus Syntax**

The use of Lotus syntax in a BizInsight Function is not supported.
20. **Missing Columns in BizInsight Query Data Dialog**

Users can only filter on columns that are listed in the data source’s table schema.

V. Best Practices

1. Using Selected Excel Data

The product requires that you have a unique name for your data. Utilize a unique Range Name or Table Name across all workbooks in a single Excel session.

The product works best when you do not alter the Worksheet Name, Range Name, or Table Name used when selecting the data (**Select Data** button). However, if you decide to change the Worksheet Name, Range Name, or Table Name, the easiest way to make sure your data is updated successfully is to add the data again using the **Select Data** button on the ribbon.

If you decide to change the Worksheet Name, Range Name, or Table Name and do not re-add the data using the Select Data option, here are the exceptions to data synchronization:

- Renaming a Table Name or Range Name will cause the Cell Address to be used in place of the original name. If the renamed Table Name or Range Name is resized on refresh, the data will not be available in BizInsight.
- Renaming a Worksheet Name and then setting focus to another Worksheet will allow BizInsight to locate the renamed Worksheet. However, if you fail to set focus to another Worksheet after renaming the Worksheet, updated data will not be available in BizInsight.

Re-naming a workbook will not cause data synchronization failures.

2. Use of Named Ranges or Cell Ranges vs. Tables

Selecting Excel tables for use as a data source (as opposed to a range of cells or a named range) is best practice. With tables, deleting a row or column from a table that has been selected with the **Select Data** button will update the selection of data seen by the product. This feature is not supported with cell ranges and only partially supported with the use of named ranges (for example, adding rows or columns to the outer edge of a named range is not supported).

3. Working with Dates, Times, and DateTimes

When working with data that is either a Date, Time, or DateTime data type, it is important for users to format the cells containing that data accordingly. Cells containing date values should be formatted as Date, cells containing time values should be formatted as Time, and cells containing a date and a time should be formatted with a custom format that contains both date and time (i.e. “mm/dd/yyyy hh:mm:ss AM/PM”).